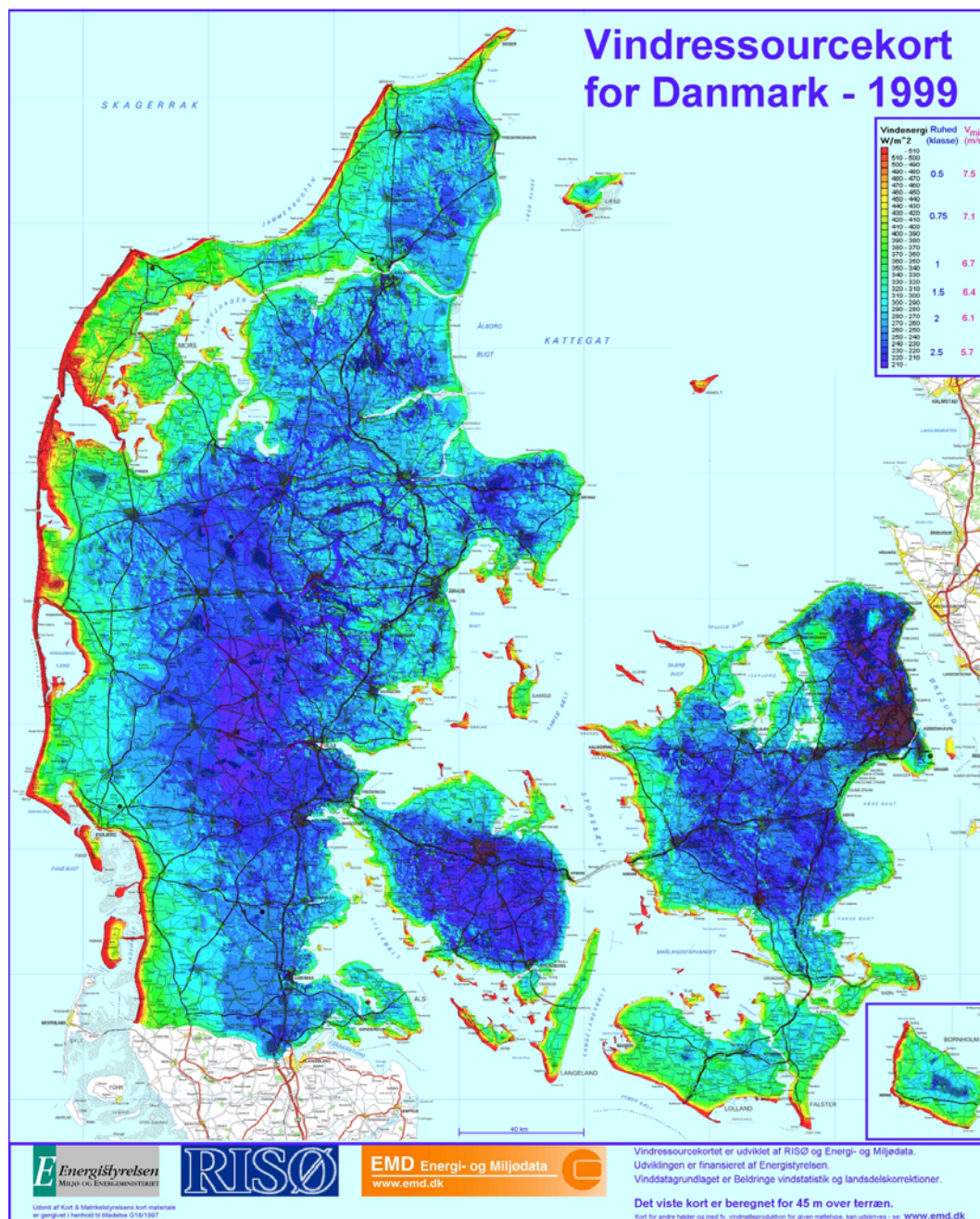


Wind Resource Atlas for Denmark



This sample map shows the wind power density in Wm² over Denmark, at a height of 45 m above ground level.

A Wind Resource Atlas for Denmark has been developed by Risø's Wind Power Meteorology Programme in co-operation with Energy & Environmental Data (EMD), Aalborg.

Contents of the resource atlas

The Wind Resource Atlas for Denmark 1999 is a comprehensive database of estimated wind climates and wind power for the entire land area of Denmark (~43,000 km²). It contains wind speed and direction distributions – in the form of Weibull *A*- and *k*-parameters and frequency roses – for points in a regular grid with a horizontal spacing of 200 m. For each point,

distributions are given for four heights above ground level: 25, 45, 70 and 100 m. The atlas further contains software for data display and retrieval. The accuracy of the Atlas has been verified by comparison with actual wind turbine power productions: the productions for more than 80% of over 1200 wind turbines are predicted to within ±10%.

More information and ordering

The atlas is available on CD-ROM and over the Internet; you can download a map image from www.emd.dk at no charge. More information can be obtained by contacting Risø or EMD.

Wind Energy Department
 Risø National Laboratory
 Technical University of
 Denmark (DTU)
 P.O. Box 49, VEA-118
 4000 Roskilde
 Denmark

Phone +45 4677 5097
 Fax +45 4677 5970
 wasp@risoe.dk
 www.wasp.dk
 www.windatlas.dk

Visiting address
 Frederiksborgvej 399
 Roskilde • Denmark